



NGC

Slewing Drive



About NGC

Nanjing High Speed Gear Manufacturing Co., Ltd. (hereinafter referred to as “NGC”) takes being “Geared for a Better Future” as its greatest responsibility, and is committed to providing users throughout the world with gearbox and transmission technology solutions. Since 1969, the company has been affiliated to the Hong Kong-listed company “China High Speed Transmission Equipment Group Co., Ltd. (00658.HK)”. The NGC brand is a world-famous brand and a key brand for cultivation and development in Jiangsu Province.

With advanced technology, reliable quality and thoughtful service, NGC has become a highly competitive partner in the global transmission technology field. At present, NGC has established the world’s largest gear manufacturing base, and in recent years has completed its global strategic layout in Europe, America and the Asia-Pacific region.



Nanjing Houjiao Road Base



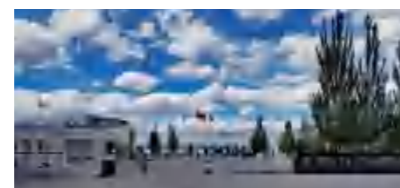
Nanjing Caiwen Road Base



Jinhu Base



Nanjing Qiande Road Base



Baotou Base



Singapore Base



Indian Base



European Base



American Base

Products of NGC



We have more than half a century of gear research, development and manufacturing technology experience. We are positioned as a global expert & solutions provider of gearboxes and power transmissions. Our products are widely used in wind energy generation, solar energy generation, rail vehicles, industrial equipment and other industries. We are focused on continuous innovation and investment in clean energy, low energy consumption and high efficiency, and the global market share of our wind energy gearbox products has exceeded 30% for many years.

Slewing Drive Series

Photovoltaic Series



PV05S / PV06S / PV07S / PV09S



PV05M



PV07M



PV07D

Photothermal Series



NHEA06B



NHEA07B

Product Characteristics

Long-term Work Safety

Through the life test, the product can work stably and reliably for more than 25 years, providing users with long-term excellent work performance.

Strong Carrying Capacity

The product structure is optimized to make the product run more efficiently. After testing, the power density of the product is increased by 10 %.

Excellent Anti-corrosion Performance

The product has passed the C3 level salt spray test, the surface rust spot and corrosion meet the requirements rust and corrosion, and has excellent anti-corrosion performance.

Adapt to Various Environments

The product is suitable for the environment of $-40^{\circ}\text{C} \sim +60^{\circ}\text{C}$, which can meet the operation requirements in various environments.

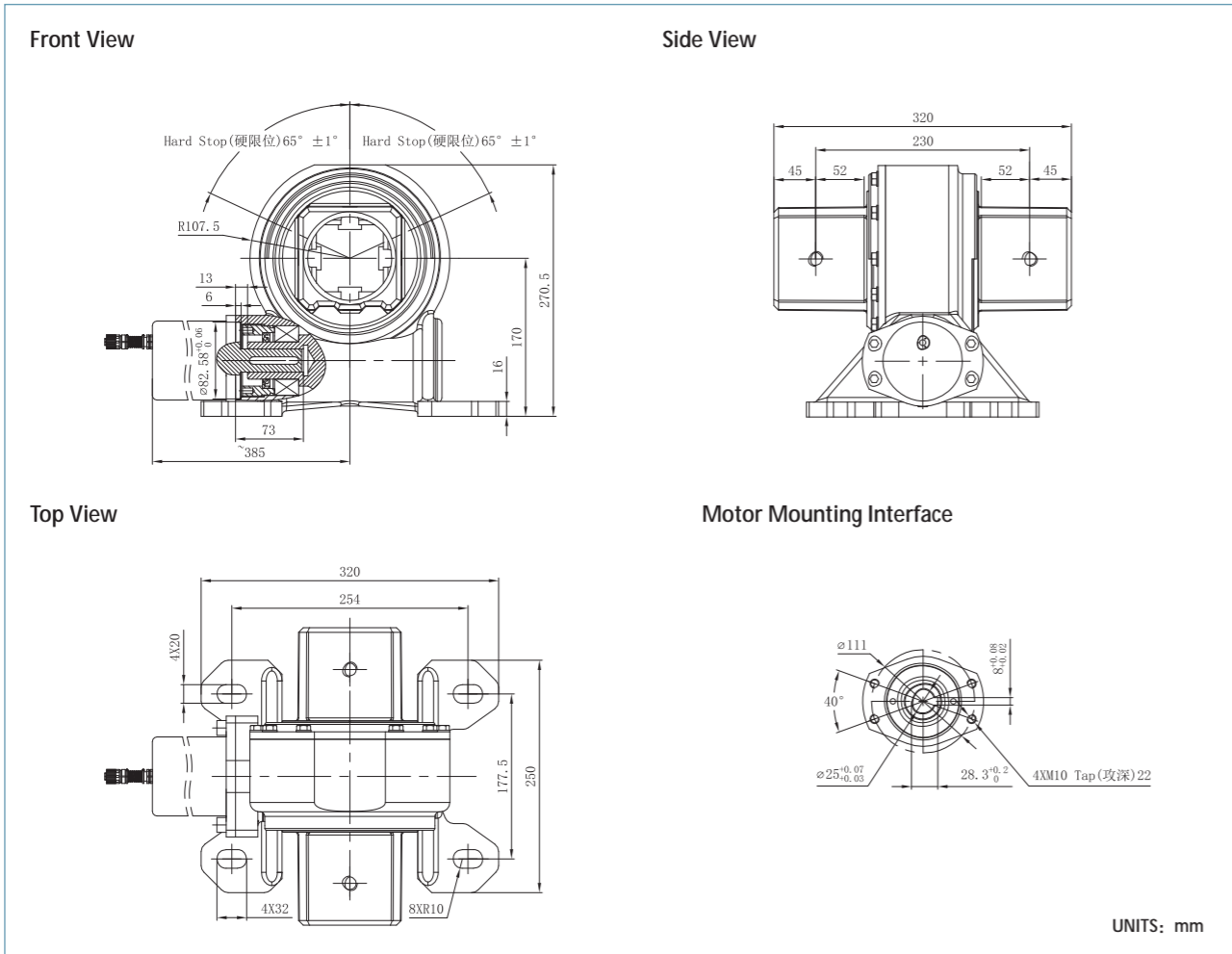
Multi-layer Sealing Protection

The product adopts multi-layer sealing to ensure long-term dustproof, waterproof and anti-seepage grease requirements.

Low Maintenance Requirements

The product is stable and reliable under long-term operating conditions, which reduces the maintenance cost.

PV05S



PV05S Slewing Drive Performance Parameters

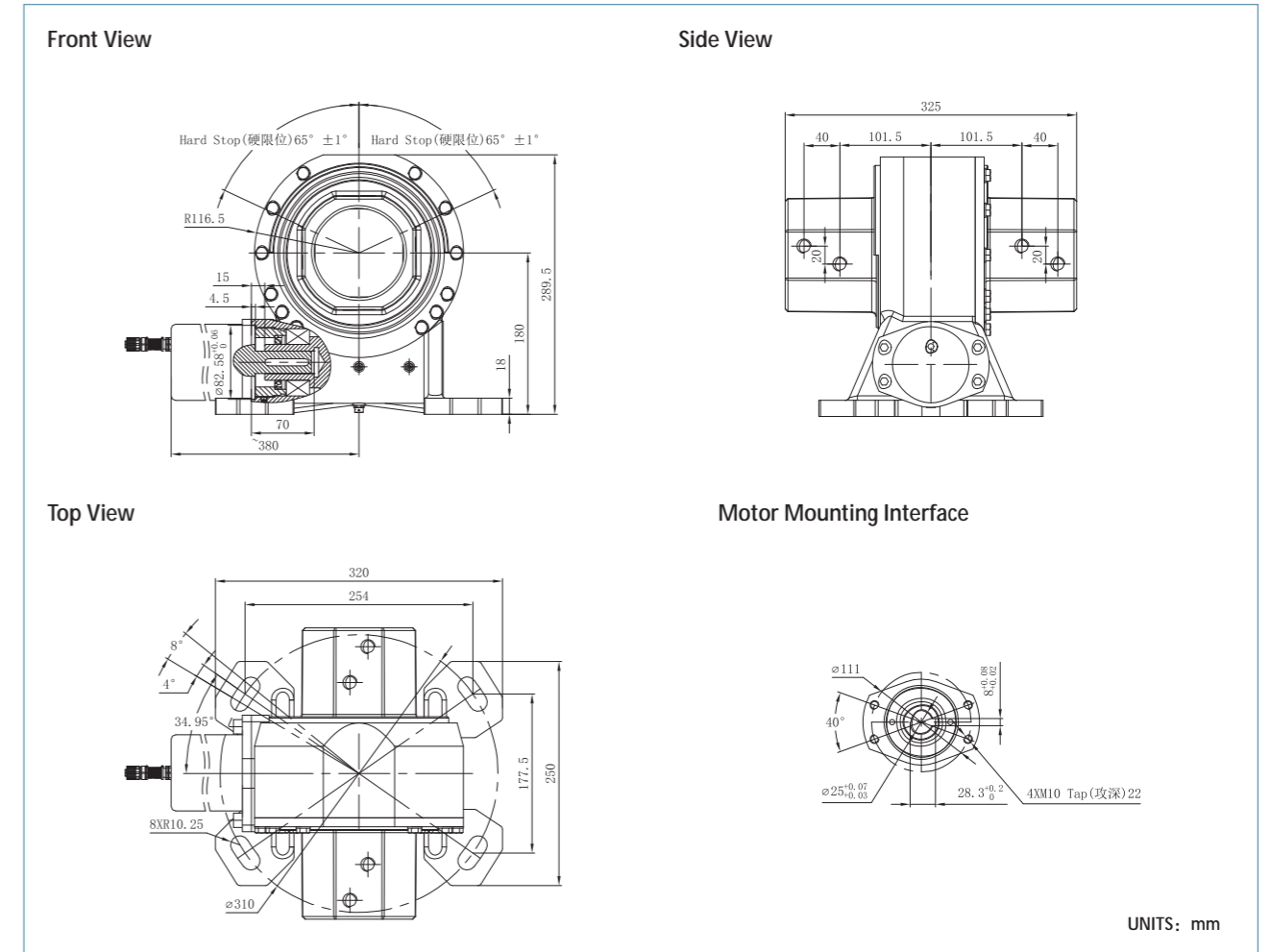
Rated Output Torque	Output Torque (Max.)	Holding Torque	Gear Ratio
3300 N·m	4800 N·m	18 kN·m	54 : 1
2435 lbf·ft	3542 lbf·ft	13284 lbf·ft	

Planetary Reducer Motor Performance Data

Rated Voltage	Rated Speed	Rated Torque	Rated Current	IP Class
24VDC	1.5 ± 10% rpm	300N·m	≤5.0A	IP 66

Special Design Base On Customer's Requirement

PV06S



PV06S Slewing Drive Performance Parameters

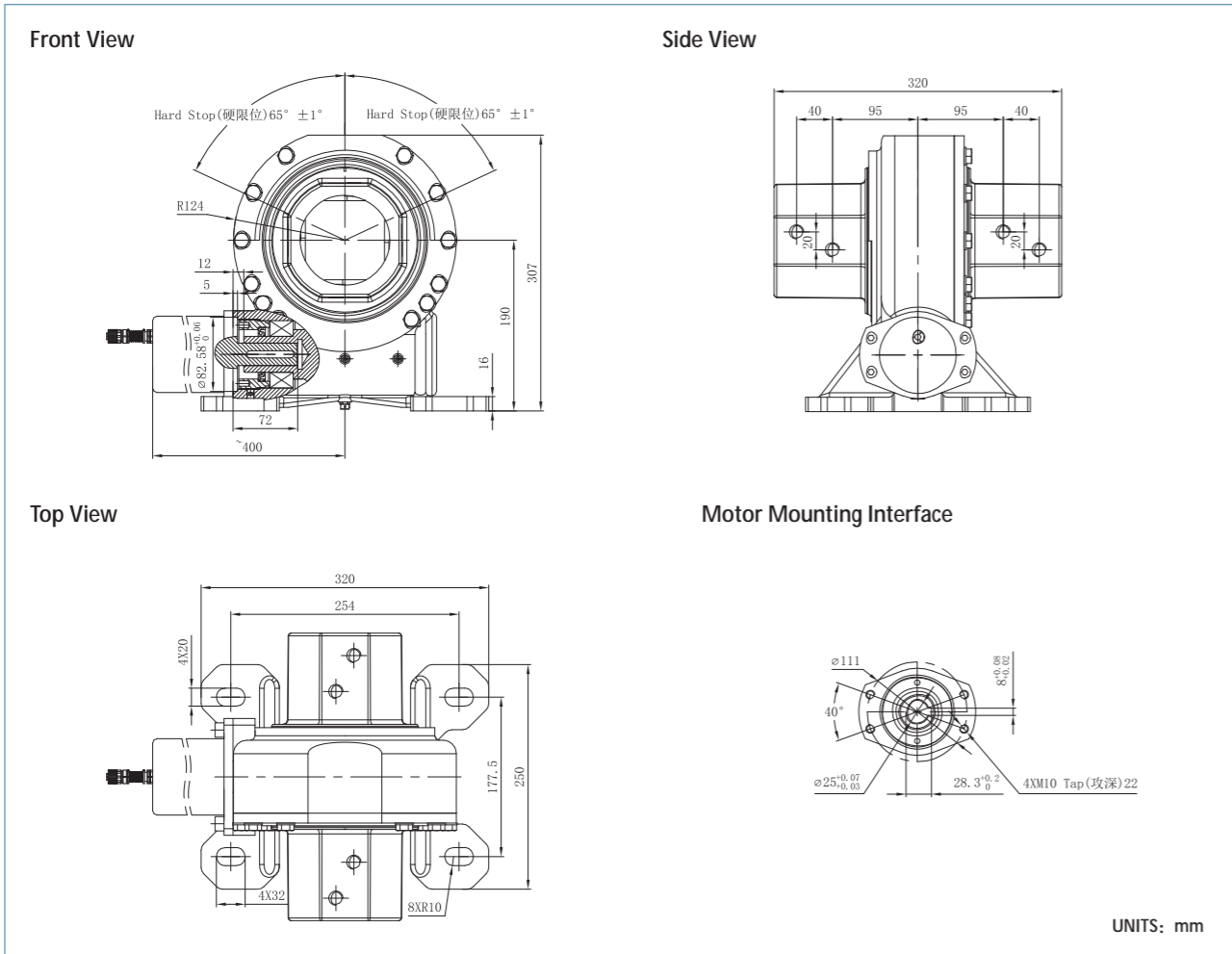
Rated Output Torque	Output Torque (Max.)	Holding Torque	Gear Ratio
4800 N·m	9350 N·m	35 kN·m	55 : 1
3542 lbf·ft	6900 lbf·ft	25830 lbf·ft	

Planetary Reducer Motor Performance Data

Rated Voltage	Rated Speed	Rated Torque	Rated Current	IP Class
24VDC	1.5 ± 10% rpm	300N·m	≤5.0A	IP 66

Special Design Base On Customer's Requirement

PV07S



PV07S Slewing Drive Performance Parameters

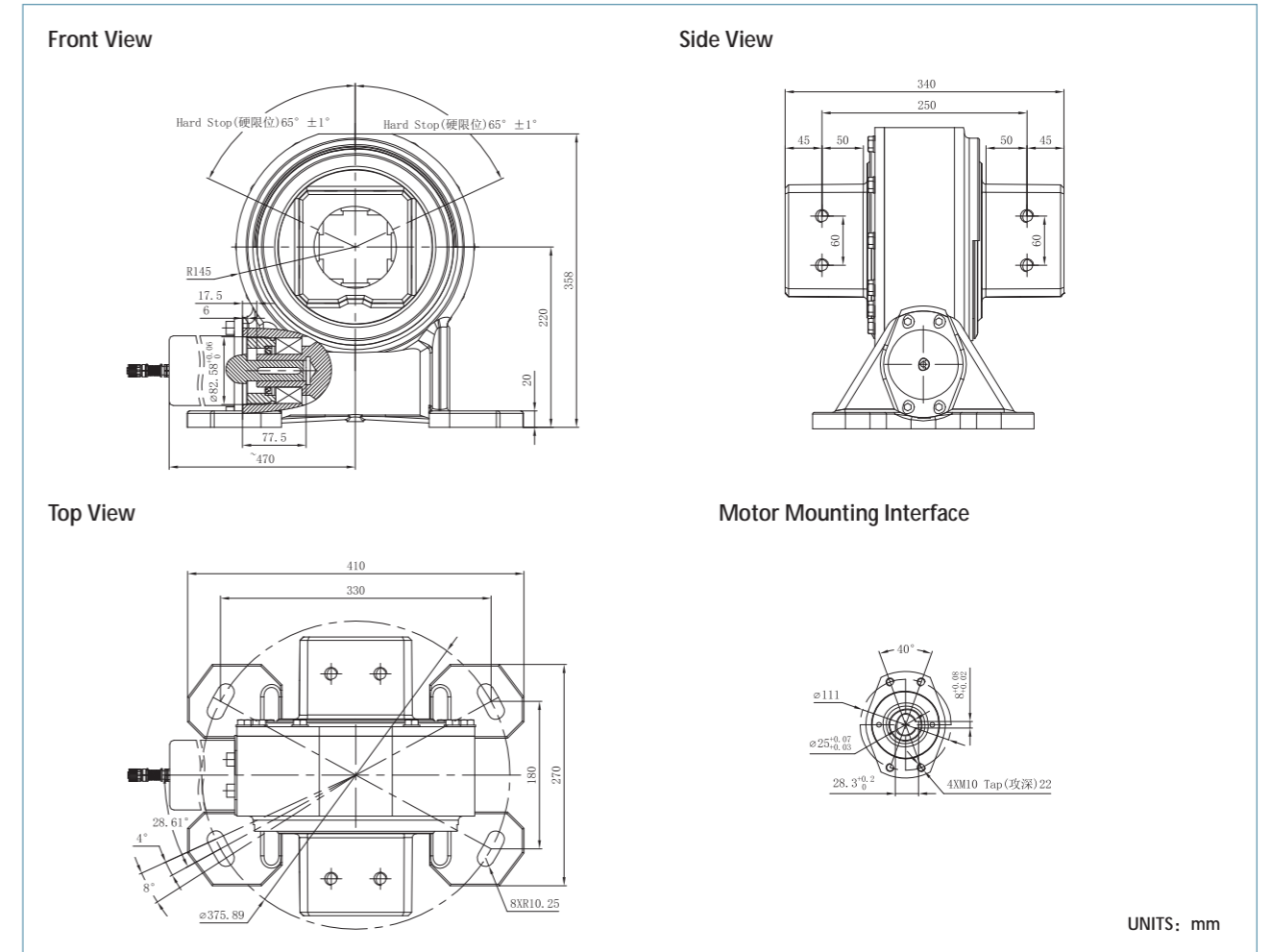
Rated Output Torque	Output Torque (Max.)	Holding Torque	Gear Ratio
6500 N·m	9500 N·m	39 kN·m	58 : 1
4797 lbf·ft	7011 lbf·ft	28782 lbf·ft	

Planetary Reducer Motor Performance Data

Rated Voltage	Rated Speed	Rated Torque	Rated Current	IP Class
24VDC	1.5 ± 10% rpm	300N·m	≤5.0A	IP 66

Special Design Base On Customer's Requirement

PV09S



PV09S Slewing Drive Performance Parameters

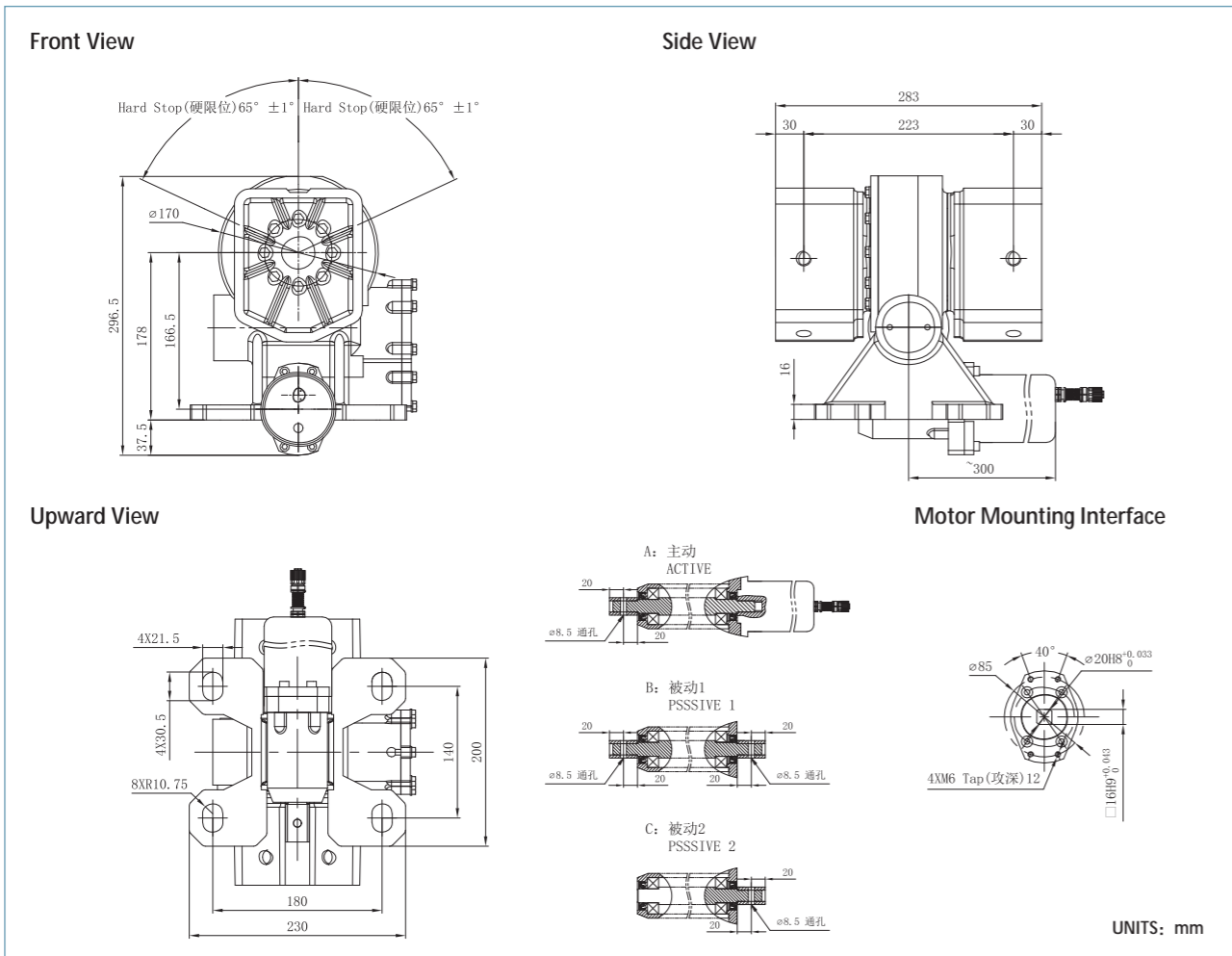
Rated Output Torque	Output Torque (Max.)	Holding Torque	Gear Ratio
6500 N·m	12500 N·m	55 kN·m	61 : 1
4797 lbf·ft	9225 lbf·ft	40590 lbf·ft	

Planetary Reducer Motor Performance Data

Rated Voltage	Rated Speed	Rated Torque	Rated Current	IP Class
24VDC	1.7 ± 10% rpm	350N·m	≤5.0A	IP 66

Special Design Base On Customer's Requirement

PV05M



PV05M Slewing Drive Performance Parameters

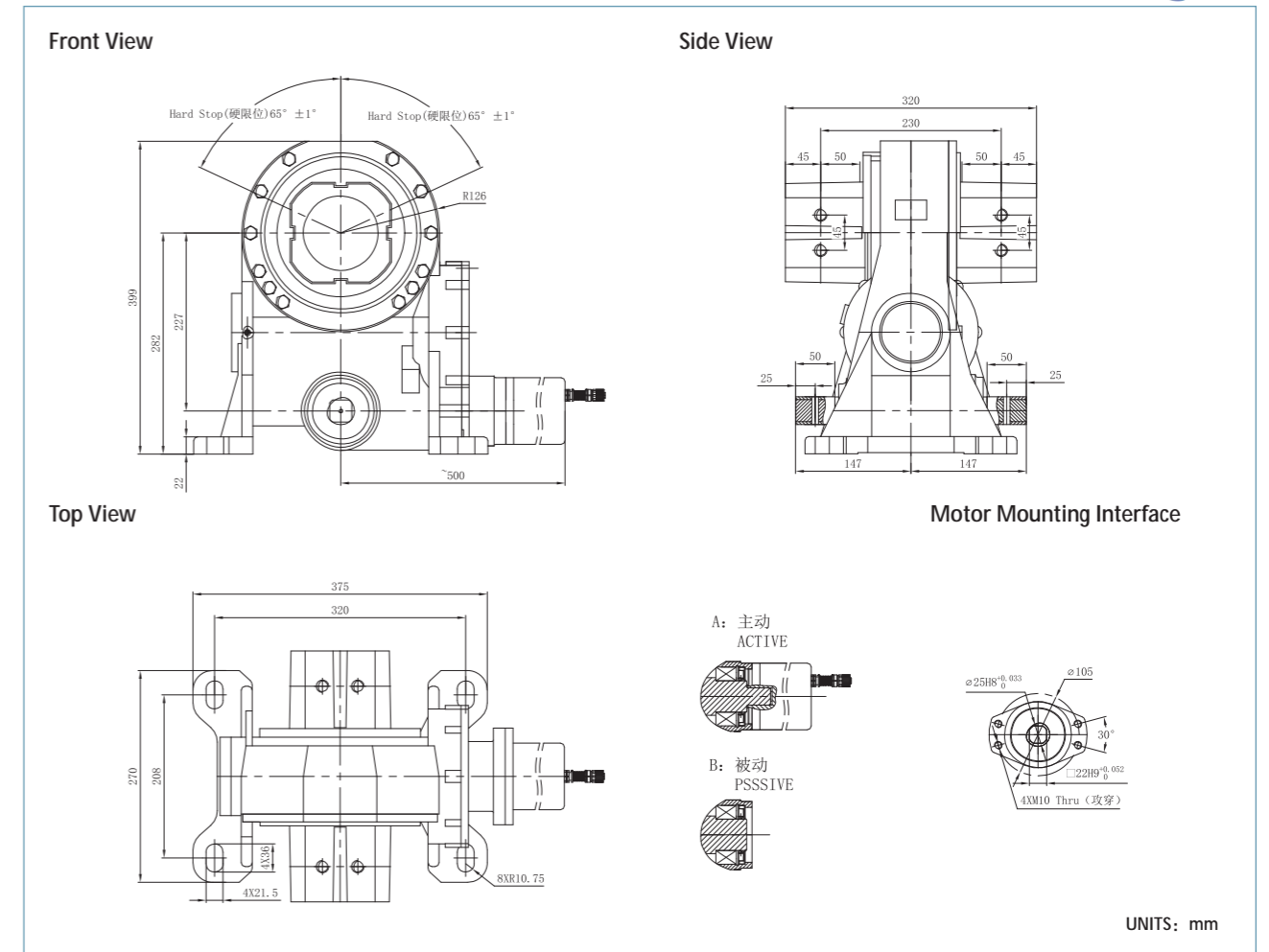
Rated Output Torque	Output Torque (Max.)	Holding Torque	Gear Ratio
1500 N·m	2000 N·m	20 kN·m	95.51 : 1
1107 lbf·ft	1476 lbf·ft	14760 lbf·ft	

Planetary Reducer Motor Performance Data

Rated Voltage	Rated Speed	Rated Torque	Rated Current	IP Class
24VDC	2.5 ± 10% rpm	240N·m	≤6.2A	IP 66

Special Design Base On Customer's Requirement

PV07M



PV07M Slewing Drive Performance Parameters

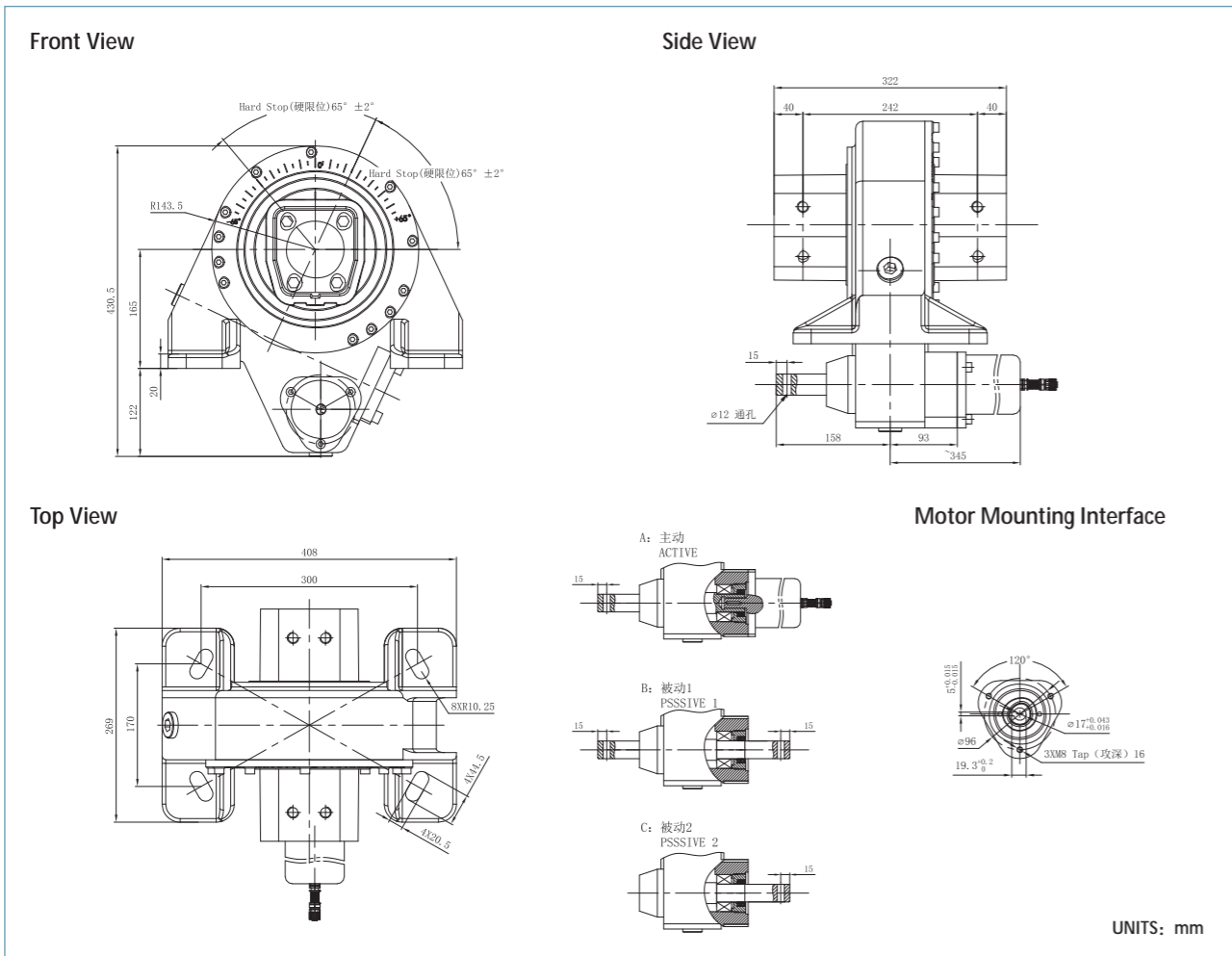
Rated Output Torque	Output Torque (Max.)	Holding Torque	Gear Ratio
5000 N·m	6600 N·m	45 kN·m	122.96 : 1
3690 lbf·ft	4871 lbf·ft	33210 lbf·ft	

Planetary Reducer Motor Performance Data

Rated Voltage	Rated Speed	Rated Torque	Rated Current	IP Class
24VDC	2.7 ± 10% rpm	345N·m	≤8.0A	IP 65

Special Design Base On Customer's Requirement

PV07D



PV07D Slewing Drive Performance Parameters

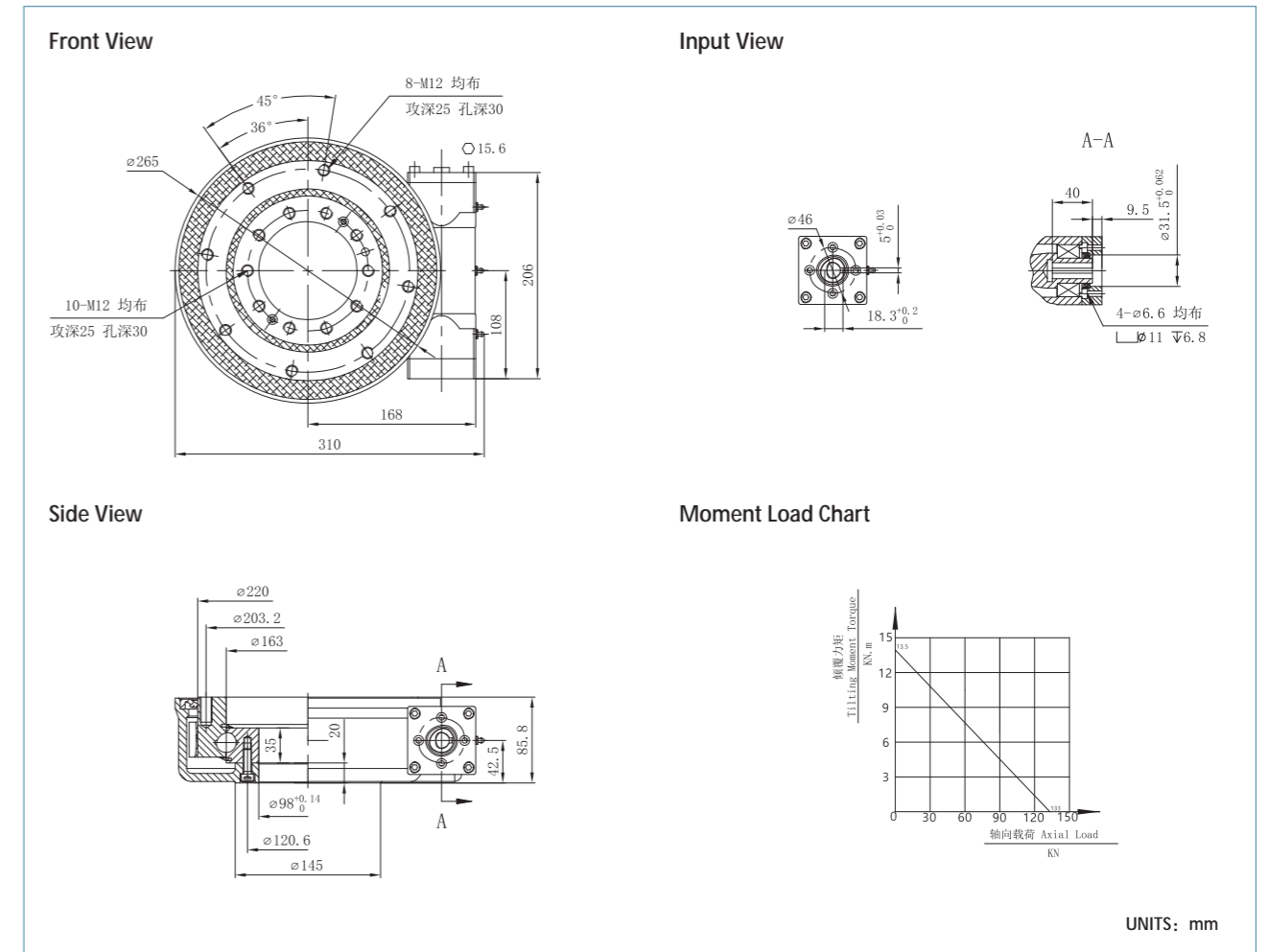
Rated Output Torque	Output Torque (Max.)	Holding Torque	Gear Ratio
7500 N·m	12000 N·m	40 kN·m	516:1
5535 lbf·ft	8856 lbf·ft	29520 lbf·ft	

Planetary Reducer Motor Performance Data

Rated Voltage	Rated Speed	Rated Torque	Rated Current	IP Class
24VDC	9 ± 8% rpm	80N·m	≤7.0A	IP 65

Special Design Base On Customer's Requirement

NHEA07B

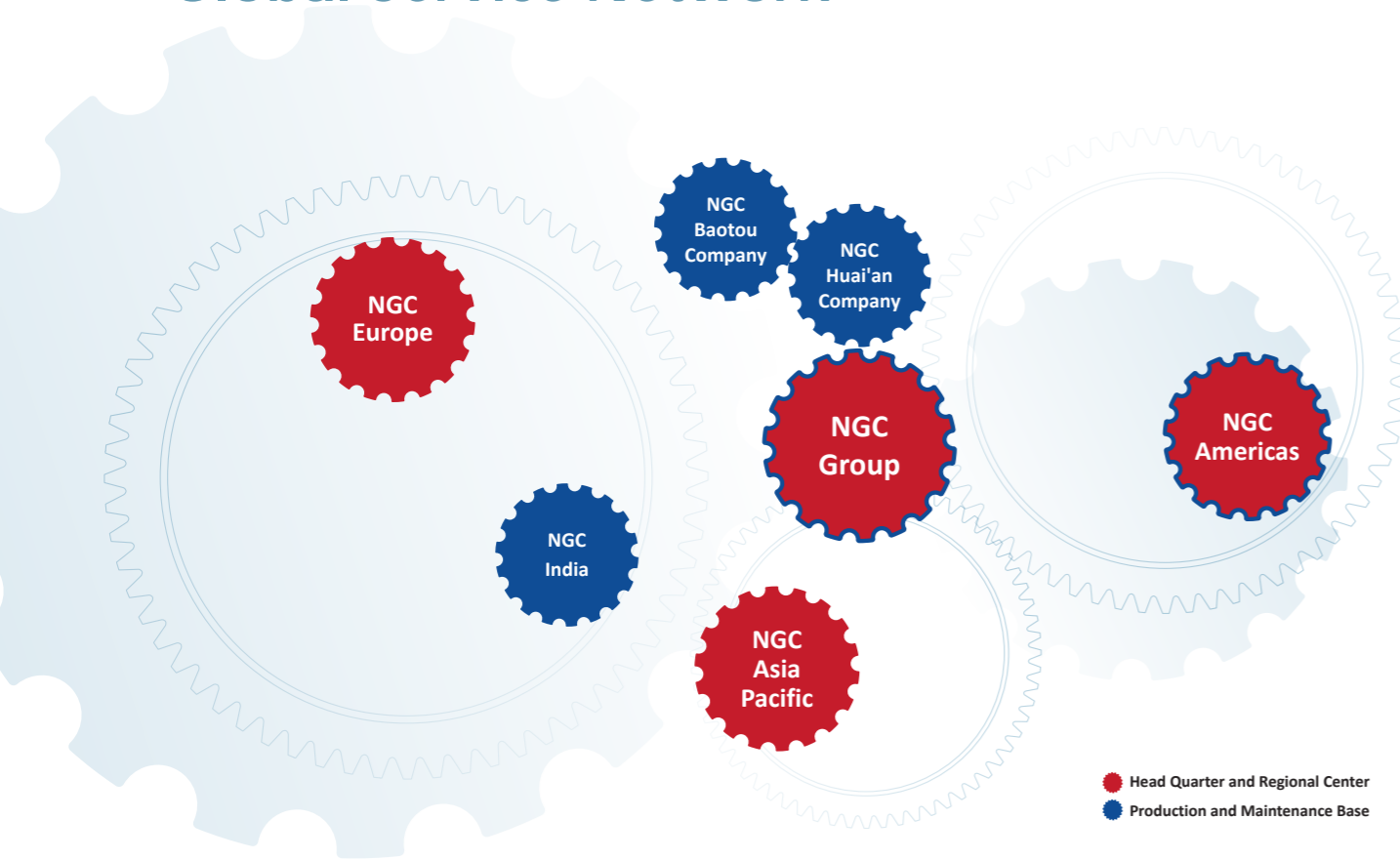


NHEA07B Slewing Drive Performance Parameters

Rated Output Torque	Moment Load (Max.)	Holding Torque	Axial Load (Max.)	Radial Load (Max.)	Gear Ratio
1500 N·m	13.5 KN·m	10.4 kN·m	133 KN	53KN	73:1
1107 lbf·ft	9963 lbf·ft	7675 lbf·ft	29925 lbf	11925 lbf	

Special Design Base On Customer's Requirement

Global Service Network



NGC Group is committed to providing customers with life-cycle product and service support. We have established global service network in China, the United States, Germany and Singapore to provide one-stop solutions for global partners and provide immediate and convenient service support.

NGC believes that the real challenge of serving users begins with the delivery of products and technical solutions. Facing the diverse needs of customers, NGC can provide life-cycle solutions such as research and development, manufacturing, installation and commissioning guidance, use and maintenance training, spare parts supply, and technological upgrading and transformation of old products. With the goal of “providing customers with high-quality products and ensuring that they receive all-round support and services throughout the entire use process”, we help customers achieve high availability and low operating costs of the transmission system, and provide full care and responsibility to the ends.

China Service Network



NGC has achieved regional management in domestic services. With Nanjing Headquarters as the center, each area covers most of the regional users in the northwest, southwest and north China. It can not only respond quickly to the needs of customers in the process of using products, but also establish a complete life cycle file for products.

The CRM system has been widely used in the service system. The full-time staff can effectively promote the solution of client problems and the improvement of customer satisfaction through information sorting, service plan formulation, on-site service, customer confirmation, cause analysis, containment improvement and service satisfaction survey.

Customer Service Commitment



Technical Support

- Professional service team
- Rich experience in gearbox maintenance
- 24/7 Service & Support

Factory Service

- Professional testing and testing equipment
- Excellent maintenance service process

Spare Parts

- Short supply cycle, ensure timely delivery
- Ensure parts or machine inventory
- High standard parts with 100 % traceability

Customized Service

- Customized service solutions on request
- For more information, please contact us directly

Certifications



NGC has always adhered to the quality policy of “quality first, customer first, high-quality service, integrity-based”, and operates the company’s management system in strict accordance with relevant laws, regulations and quality management requirements to ensure and improve product quality and achieve various goals. Over the years, we have always passed the spot inspections of quality and technical supervision departments at all levels with a 100% pass rate.

Since the 1990s, NGC has begun to implement ISO9001, ISO14001, OHSAS18001 and other systems, and in 2015, it introduced the API Q1 system of the petroleum industry. In 2016, the company further introduced a performance excellence management system and a risk management system to standardize our manufacturing and management processes with the most advanced and strict management standards. Currently, NGC gearboxes have passed multiple product certifications, such as CE certification to enter the European market, ETL certification to enter the U.S. market, etc.

Contact Us

Headquarters

Slewing Drive for Photovoltaic

Add: No.79 Qiande Road, Jiangning District, Nanjing, 211100, PR China

Tel: +86 18061607168

+86 25 5217 2849

Fax: +86 25 5217 2700

Email: GRsales@NGCtransmission.com

Global Operations

NGC Americas

NGC Transmission Equipment (America), Inc.

Add: 5500 Alliance Gateway Freeway, Fort Worth, Texas 76177, USA

Tel: +1 817 5677499

Fax: +1 817 567 7495

Email: AMRegion@NGCtransmission.com

NGC Asia Pacific

NGC Transmission Asia Pacific Pte. Ltd.

Add: 51 Changi Business Park Central 2, #06-08, The Signature,
Singapore 486066

Tel: +65 6589 8588

Fax: +65 6588 3557

Email: APRegion@NGCtransmission.com

NGC India

NGC Transmission India Pvt. Ltd.

Add: DG Square, Unit 6A, 127 Pallavaram - Thoraipakkam
200 Feet Radial Road, Kilkattalai, Chennai 600117, India

Tel: +91 44 6612 3500

Fax: +91 44 6612 3535

Email: NGC.India@NGCtransmission.com

NGC Europe

NGC Transmission Europe GmbH

Add: Pontwert 43, 47059 Duisburg, Germany

Tel: +49 (0)203 509 600 0

Fax: +49 (0)203 509 601 90

Email: EURegion@ngctransmission.de

This is only for promotion and advertisement, not a technical document. Please refer to related product catalogues for detailed information about product performance, specifications, after-sales services etc.



www.NGCtransmission.com

HK Stock Code: 00658

Version No.: 202401EN